

February 24, 2010

NOTICE OF PUBLIC HEARING

**LAFCO APPLICATION NO. 2009-06 – FORMATION OF COUNTY SERVICE AREA
(CSA) NO. 27 – EMPIRE (PHASE 1)**

NOTICE IS HEREBY GIVEN THAT the Stanislaus Local Agency Formation Commission (LAFCO) will hold a public hearing on **Wednesday, March 24, 2010**, at a meeting starting at 6:00 P.M. in the Joint Chambers, Basement Level, Tenth Street Place, 1010 10th Street, Modesto, California, to consider the following:

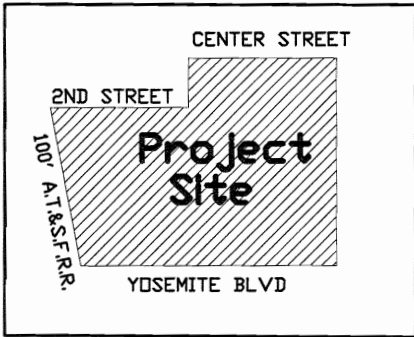
- Stanislaus County is requesting the formation of a new County Service Area (CSA) No. 27 – Empire (Phase 1), in order to create a funding mechanism to provide the following extended county services: operation and maintenance of a storm drain system and street sweeping services benefiting approximately 80 parcels, within the unincorporated community of Empire. The County proposes to implement the construction of the Empire Storm Drain System in three (3) phases. Phase 1 will encompass a total area of 44.52 +/- acres, and is generally located: North of State Route 132; east of the Santa Fe Railroad; south of Second Street and Center Avenue. (See Attached Map)

NOTICE IS ALSO HEREBY GIVEN that it is the intent of the Commission, if the proposal is approved, to waive subsequent protest proceedings whenever all conditions as prescribed by State law authorizing such waiver are met, and if no opposition from registered voters or landowners **within** the affected territory is received prior to or during the Commission meeting. If you challenge the above item in court, you may be limited to raising only those issues raised at the public hearing described in this notice, or in written correspondence delivered to the Commission, at or prior to, the public hearing. Copies of the staff report on this matter will be available at the LAFCO Office, or by calling (209) 525-7660. All interested parties are invited to attend the public hearing.

NOTE: Any written materials to be accepted and considered by the Commission must be presented to the LAFCO office no later than March 12, 2010, in order for the submitted materials to be placed in the Commission's mailed agenda packet. No correspondence addressed to the Commission, individual Commissioners or staff will be accepted and/or considered unless it has been signed by the author, or sufficiently identifies the person or persons responsible for its creation and submittal. Materials submitted to the Commission for consideration (i.e., photos, slides, petitions, letters, etc.) will be retained by LAFCO and cannot be returned. Comments may be submitted by U.S. Mail to the address listed below; by Fax to: (209) 525-7643; or by email to: blomm@stancounty.com.

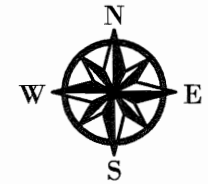
STANISLAUS LOCAL AGENCY FORMATION COMMISSION
Marjorie Blom, Executive Officer
1010 10th Street, 3rd Floor
Modesto, CA 95354

(I:\LAFCOadmin\LAFCO\CSAs\CSA No. 27 – Empire.Phase 1\MailedNotice)

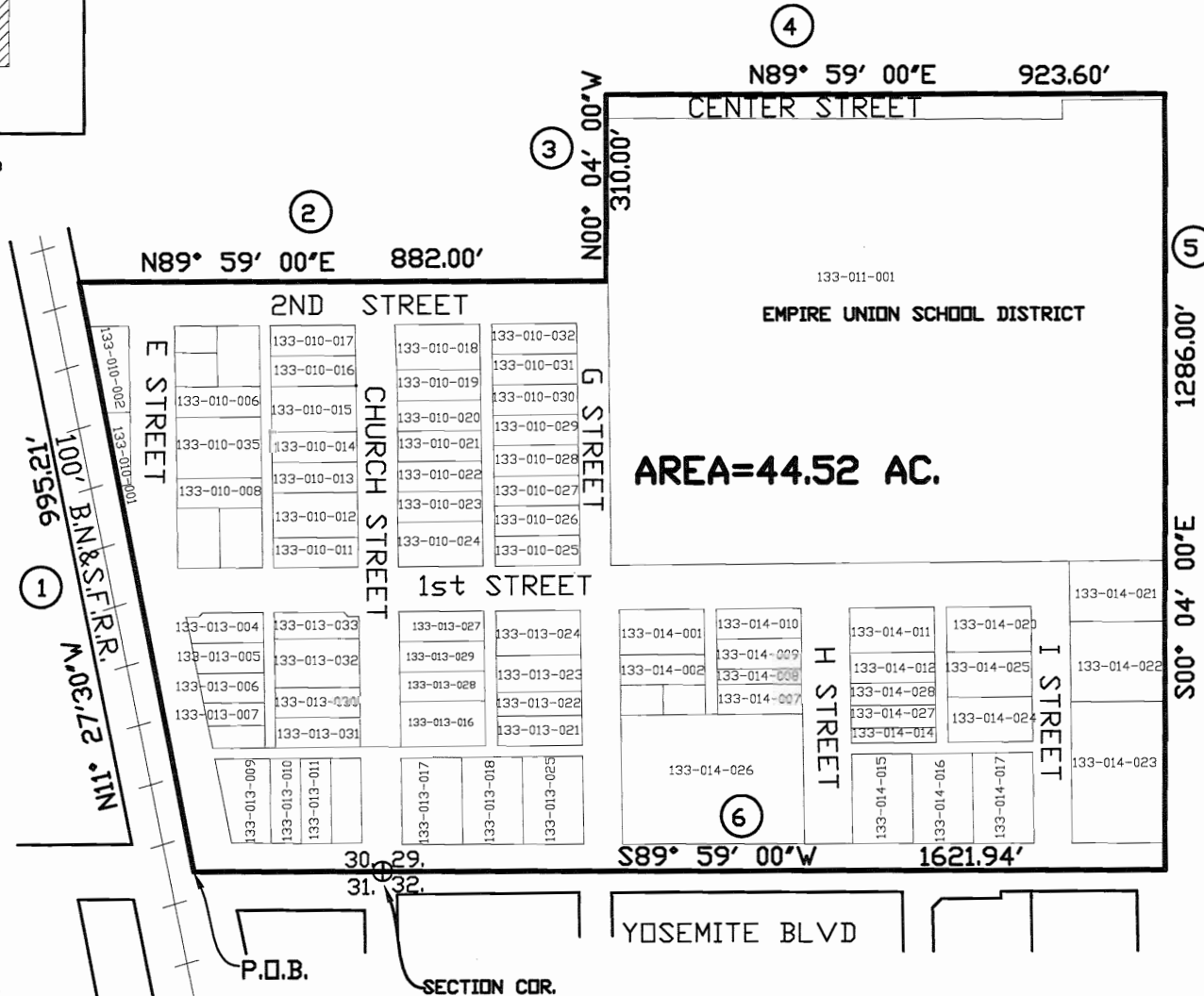


Vicinity Map
Not to Scale

EXHIBIT 'B'



SCALE: 1"=300'



Formation of County Service Area (CSA) No.27- Empire (Phase 1)	DEPARTMENT OF PUBLIC WORKS STANISLAUS COUNTY		
BEING A PORTION OF SECTION 29 AND 30 TOWNSHIP 3 SOUTH, RANGE 10 EAST M.D.B.M.	DATE: 08-17-2009	SCALE: 1"=300'	DRAWN BY: NCW CHECKED BY: LF